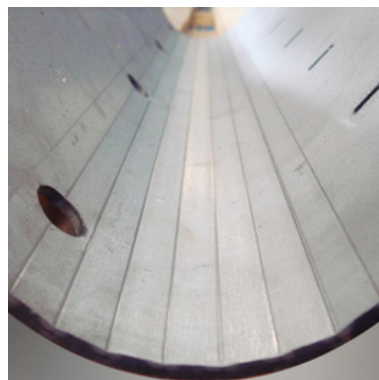


ELLETIELLE

KEY DATA	MATERIALS
<p>N° of employees: 45 employees</p> <p>Sales volume: € 9 M</p> <p>Certifications: EN 1090-1</p> <p>Founded in 2003</p>	<ul style="list-style-type: none">• Steel• Stainless steel• Special steels• Aluminum alloy• Copper• Brass
SECTORS	TECHNOLOGIES
<ul style="list-style-type: none">• Structural sector• Mechanical sector• Furniture market	<ul style="list-style-type: none">• Laser cutting• Plasma cutting• Oxy-fuel cutting• Tube cutting• Press-brake bending• Machining center operations• Roll bending / Plate rolling• Punching



MACHINERY

Laser cutting machine – MSF12001.30 L

- Working area: 12,000 mm × 3,000 mm (X = 12,000 mm, Y = 3,000 mm)
- Maximum height (Z-axis): 115 mm

Plasma cutting system – Teknos Tecoi

- Working area: X = 25,000 mm, Y = 3,000 mm
- Cutting thickness: from 8 mm to 40 mm (steel)
- Equipped with BEVEL head and drilling/tapping head
- Includes VIBRATEC system for automatic scrap evacuation to collection tank

Oxy-fuel cutting system

- Cutting thickness range: from 8 mm to 200 mm
- Certified cutting quality: EN ISO 9013–Class I
- Working area: 3,000 mm × 12,000 mm

Tube laser cutting machines – LT FIBER EVO / LT JUMBO 20

- Designed for tubes, open profiles, H/IPE beams, and special profiles
- Accuracy ensured by preliminary laser scanning

Machining center – Awea BM1600

- Type: 3-axis machining center (fixed head)
- Tools: 40 tools
- Movable worktable: 1,600 mm × 800 mm
- Working height: 800 mm
- Equipped with 2 magnetic tables: 600 mm × 400 mm
- Vise: 175 mm × 375 mm
- Structure: base, column, carriages, and table in Meehanite cast iron with ribs; wide boxways for high precision and tool durability

Welding systems

- Welding department equipped for multiple processes